

ClearPath Connection

UNISYS
imagine it. done.

Q3 2009

A quarterly newsletter for Unisys ClearPath customers

Contents

- | | | |
|----|---|----------------|
| 2 | Driving ClearPath Development to Help You Maximize Business Value | |
| 5 | Unisys ClearPath SOA Services – Guiding Your SOA Transformation | |
| 7 | Unisys Services Get Specialty Engines Up and Running In Record Time | |
| 8 | Tech Corner: A Look at Workload Management for ClearPath MCP | MCP |
| 11 | ClearPath Dorado System Provides Customers with Impressive Uptime and Reliability | OS 2200 |
| 12 | TravelSky, EMC Insurance, and Copercana Count on ClearPath Servers | |
| 14 | Storage and Software News | |
| 15 | Calendar | |
| 16 | Partner News: Formula Consultants Inc. | OS 2200 |

Not a subscriber of ClearPath Connection?
Don't miss the next issue – [sign up in the eCommunity.](#)

Driving ClearPath Development to Help You Maximize Business Value

By Ann Thureen, VP of ClearPath and Real Time Infrastructure Development, Unisys Systems & Technology

With the launches of new ClearPath servers, as well as a wide range of supporting software solutions, the first half of 2009 has been an exciting time for Unisys ClearPath Development. Our teams have invested countless hours bringing these new innovations to light, and we are all very proud of the accomplishments these releases represent. All told, we've delivered five new servers and hundreds of software features in the last six months.



What's more, we are delivering these servers and software solutions while continuing our long-standing commitment to rock-solid reliability, availability, and security in the ClearPath infrastructure. Unisys engineers know what it takes to support mission-critical mainframe workloads – and the fact that we measured the highest Mean Time Between Failures (MTBF) of any release with the latest version of the OS 2200 operating system, release 12.0, proves this point.

Of course, during challenging economic times such as these, you need to do everything you can to extract the greatest business value from existing investments – today. We understand that your ClearPath environment represents a significant investment, and as such, we are committed to helping you maximize your value with many cost-saving features.

The best way to do this? I think it's by leveraging what you already have to address new challenges and differentiate yourself from the competition. That's why we are investing engineering know-how into providing you with an ever-expanding set of capabilities that allow you to utilize your ClearPath systems in new ways.

Best Bets

Some of our customers are well on their way to expanding the reach of ClearPath applications using new features and software products from the latest OS 2200 and MCP operating environment releases. Others are just getting started. The following are my “best bets” for ways your organization can get more value from its ClearPath environment.

Provide Greater Accessibility to Information

Putting business-critical information in the right hands at the right time is a key to reducing costs. With the inherent flexibility of the ClearPath environment, you can easily accomplish this goal. Think about launching a web enablement initiative that allows your customers to access ClearPath applications from remote locations, or gives your sales force immediate access to data through mobile devices, such as iPhones. We've expanded our offerings and made this much easier to do with new products, including [ClearPath ePortal](#), and enhancements to [Business Information Server \(BIS\)/Internet Commerce Enabler \(ICE\)](#), and [Enterprise Application Environment \(EAE\)/Agile Business Suite](#). >>

Quickly Adapt to Changing Business Demands

Tight economy or not, your organization has to respond to shifting business needs. It is also pressured to save money by streamlining business processes. One way to do this is to integrate the applications you already have. For example, you can combine different applications into a single view for your users by exposing transactions within your MCP or OS 2200 application suites as services to be consumed by or combined with those running in any environment in your data center. This can be accomplished using our transaction connection offerings, such as OpenTI/DTI, COMTI, and ODBC for BIS. You can also access the mission-critical data hosted on your ClearPath platforms from programs written in .NET and Java, or from applications running on other operating systems using such industry standard data connectors as JDBC, ODBC, BIS, or XML.

We improved the access to these integration capabilities with our ClearPath [OS 2200 JProcessor](#), [MCP JProcessor](#), and [OS 2200 QProcessor](#) specialty engines, without compromising security, reliability, or performance.

These products – along with many I didn't name – enable your ClearPath environment to be a full participant in a service-oriented architecture (SOA) framework. Moving to SOA has long-term cost benefits for making future enhancements and many of you are choosing to adopt SOA in incremental steps. Should you choose to embark on a SOA modernization project, we have [ClearPath-specific services](#) that deliver measurable results each step of the way.

Improve Developer Productivity

By leveraging the enhancements we have made in ClearPath development environments, you can make your “ClearPath experienced” programmers more efficient and bring programmers on board who have never seen a ClearPath before. Using the Eclipse™ IDE for ClearPath OS 2200 or MCP, developers can now perform coding or debugging processes in languages such as C and Java, as well more mature languages like COBOL, Fortran, and ALGOL. Moreover, our new Eclipse code generation wizards automate coding for those programmers who are unfamiliar with mainframe conventions and development toolsets. And, enhanced standard SQL features ease database programming activities.

What's more, we continue to improve our popular development tools: BIS and ICE, EAE, and Agile Business Suite. These products offer excellent capabilities that help you shorten development cycles and bring new IT services to fruition quicker.

Managing Infrastructure Costs

We have many capabilities that help you make the most efficient use of your infrastructure. These include managing your MIPS with metering technology, capacity on demand, and performance distribution features. You can also reduce costs with our new “greener” systems offerings, or by reducing the use of paper and physical media – using Enterprise Output Manager to distribute reports in electronic formats or our virtual tape solutions to decrease the need for tapes. >>

Service Offerings Speed Up Savings

With our ever-expanding, ever-improving portfolio of service offerings, you can capitalize on these cost-saving opportunities as quickly and effectively as possible. Our services personnel leverage Unisys reference architectures, which provide proven best practices for using many of the integration capabilities we provide for ClearPath systems.

We have a great team of technical experts in our geographic regions who are there to help you get started. These folks work closely with Engineering to bring you the latest capabilities and provide ideas for improvement. Be sure to talk with one of them next time you have a chance – your feedback may become the next ClearPath development innovation.

It is the unwavering commitment of everyone from the Unisys Engineering team to our corporate executives to help you realize the maximum value from your ClearPath investment. With such a strong, company-wide emphasis on ongoing ClearPath development, there's never been a better time for your development team and your ClearPath systems to do great things for your organization.

Looking for more about development tools from Unisys? [Sign up for Developing *Agility*](#), a quarterly newsletter dedicated to helping organizations obtain maximum value from Agile Business Suite (AB Suite) and Enterprise Application Environment (EAE).



Unisys ClearPath SOA Services – Guiding Your SOA Transformation

As more pressure is placed on IT to drive competitive differentiation, there's greater emphasis than ever before on developing new applications and updating existing ones. And yet, the window in which you must deliver new capabilities, as well as the budgets available, continues to shrink. In light of these challenges, how can your business respond to emerging challenges with efficiency, agility, and flexibility – and keep costs in check?

To answer this challenge, many organizations have adopted an approach that combines existing applications and databases with new components to deliver innovative IT services. A widely accepted framework for availing services in this way, service-oriented architecture (SOA) enables existing applications and databases to be reused across a variety of user requirements.

And as the hub for many core business applications and data, your ClearPath systems are prime candidates for inclusion within a SOA framework. Doing so helps you extract greater value from current investments and, in turn, avoid the expenses and risks typically associated with implementing brand-new systems. Best of all, ClearPath systems contain the industry-standard technology required for SOA participation.

Making the transition to SOA – and leveraging your ClearPath application and database assets to get there – just got easier with Unisys ClearPath SOA Professional Services. Our goal is to simplify the journey to SOA through an evolutionary approach that helps you establish a clear vision, understand which technology options make the best business and technical sense, and design, validate, and implement your new SOA environment. Even if you have made steps toward SOA in the past, these services will help guide you through the SOA transformation process.

Think Big, Start Small, Accrue Measurable Results

Unisys ClearPath SOA Professional Services follow an approach that is best summed up by the following vision: think big, start small, accrue measurable results. SOA transformation is a journey that encapsulates the full scope of business and IT processes through a set of incremental steps, each with a well-defined starting point, concrete milestones, and an achievable finish line.

We have defined a service approach that will help your ClearPath applications and databases participate in an enterprise-wide SOA. Where you start and what services you utilize are entirely based on your organization's specific SOA needs. The services include:

1. Opportunity Discovery:

- Discuss the business case for SOA transformation
- Agree upon key business and technical benefits
- Analyze available technical and operational skills

2. Readiness Assessment:

- Gain a common understanding of SOA terminology, technology, and standards
- Determine candidate architectures and impact on current IT infrastructure
- Identify potential obstacles
- Develop a tactical approach for forthcoming phases >>

3. Scoping Workshop:

- Draft architectural topology
- Develop functional specifications, interfaces, connectivity patterns, and information format for pilot implementation
- Outline strategy for common services, including error handling, monitoring, and auditing
- Discuss tuning and operational processes
- Define intended security strategy

4. Pilot Design:

- Define prototype contents
- Outline prototype evaluation criteria
- Determine initial governance metrics

5. Pilot Execution and Evaluation:

- Execute pilot design
- Evaluate results
- Refine pilot design
- Examine functional and non-functional characteristics

6. Deployment:

- Provision staging and production environments

SOA and ClearPath — Extending the Value for Increased Business Agility

Please read the series of technical white papers listed below to learn the basics of SOA, understand how to leverage it in your ClearPath environment, and see how you can maximize the value of SOA today.

- [Service-Oriented Architecture: Delivering for Business](#)
- [Service-Oriented Architecture: ClearPath Systems in SOA](#)
- [Middleware Strategy and Products for ClearPath OS 2200 and ClearPath MCP Systems](#)
- [The ClearPath Service Line: Enabling the Real-Time Enterprise](#)

Step by Step to SOA

Unisys ClearPath SOA Services follow an incremental, phased approach that delivers measurable results in small, well-defined, and useful steps. You can get started in any number of ways, even by simply making a single ClearPath transaction available as a service. Contact your Unisys sales representative to learn more about how Unisys consulting professionals can support your SOA endeavors.

Unisys ClearPath SOA Service Set



Unisys Services Get Specialty Engines Up and Running In Record Time

With the Unisys ClearPath OS 2200 JProcessor and MCP JProcessor specialty engines, it has never been easier to leverage industry-standard tools to create new and innovative Java applications running under the control of the OS 2200 and MCP operating environments. These specialty engines are fully integrated with your ClearPath system, providing a secure, robust, and high-performance runtime environment for Java and Java EE applications.

To help you realize the most economic value from your investment in an OS 2200 JProcessor or MCP JProcessor – *and to make installation and ongoing administration as smooth as possible* – we're happy to announce the availability of the ClearPath OS 2200 and MCP JProcessor Implementation Services.



These services cover more than installation – helping to ensure that the specialty engine is properly aligned with all aspects of your data center operations, from routine administration to backup and recovery. The goal is to establish a “ready to use” environment that supports development and is well integrated with existing system management processes.

During the ClearPath OS 2200 JProcessor or MCP JProcessor Implementation service, Unisys technical consultants work with your team to:

- Conduct an implementation planning meeting
- Review JBoss Application Server™ prerequisites
- Validate the hardware, software, and resource adapter requirements
- Configure the OS 2200 JProcessor or MCP JProcessor to your unique Java requirements

To learn more about the ClearPath OS 2200 JProcessor or MCP JProcessor Implementation Service, please contact your Unisys sales representative.

Tech Corner: A Look at Workload Management for ClearPath MCP

By Sharon Lee, Engineering Manager, ClearPath MCP Workload Management

With all eyes on the bottom line these days, data center managers are on alert – searching for new ways to run their operations more efficiently, at a lower cost, and without introducing undue risk.

So, here's a hidden gem that can deliver a solid economic return for organizations running ClearPath MCP systems – Workload Management for ClearPath MCP.



MCP

What is Workload Management for ClearPath MCP?

Introduced in 2005, Workload Management for ClearPath MCP is proven technology that expands the toolset used to manage your ever-changing mix in response to business demands. It goes well beyond manual priority adjustments – providing sophisticated capabilities to define Workload Groups and performance goals and enable system resources to be automatically aligned with business priorities in real time.

With Workload Management for ClearPath MCP, system resources are allocated based on user-specified Workload Groups and business-oriented performance goals. Workload Groups are a collection of processes that share a common goal. While they frequently map to an application, that's not always the case. For example, a single application may have online transaction and batch report components – which would not typically share the same performance goal. In this situation, two Workload Groups could be defined – each with a suitable goal. For more details about defining Workload Groups, see slides 10-17 in our [Workload Management presentation](#) in the eCommunity.

Another important concept is that of Workload policies, which allow you to automatically change performance goals based on the time of day, month, or year. In addition, the solution includes Workload Center, a Microsoft® Windows® based graphical user interface (GUI) that allows you to configure and control Workload Managers and provides real-time performance monitoring. Using easy-to-follow gauges and charts, Workload Center displays system resource utilization and whether goals are being satisfied. It also includes reports that take a historical view of goal compliance and resource usage.

Keep it Simple and Get Immediate Benefits

While Workload Manager offers a comprehensive set of capabilities, most organizations “start small” by using one or two key features. Consider the value of the following:

Runaway program monitoring/prevention: Especially valuable to organizations that run ClearPath servers with a Pay-for-Use business model, Workload Manager provides user-selectable limits on individual processes. These limits include maximums on consumption rates and CPU, I/O, and Enterprise Database Server (DMSII) usage. If a process exceeds any limit, staff members are notified and the rogue process can be suspended or terminated. Many customers have seen great benefit from using just this one aspect of Workload Manager in their metered environments. >>

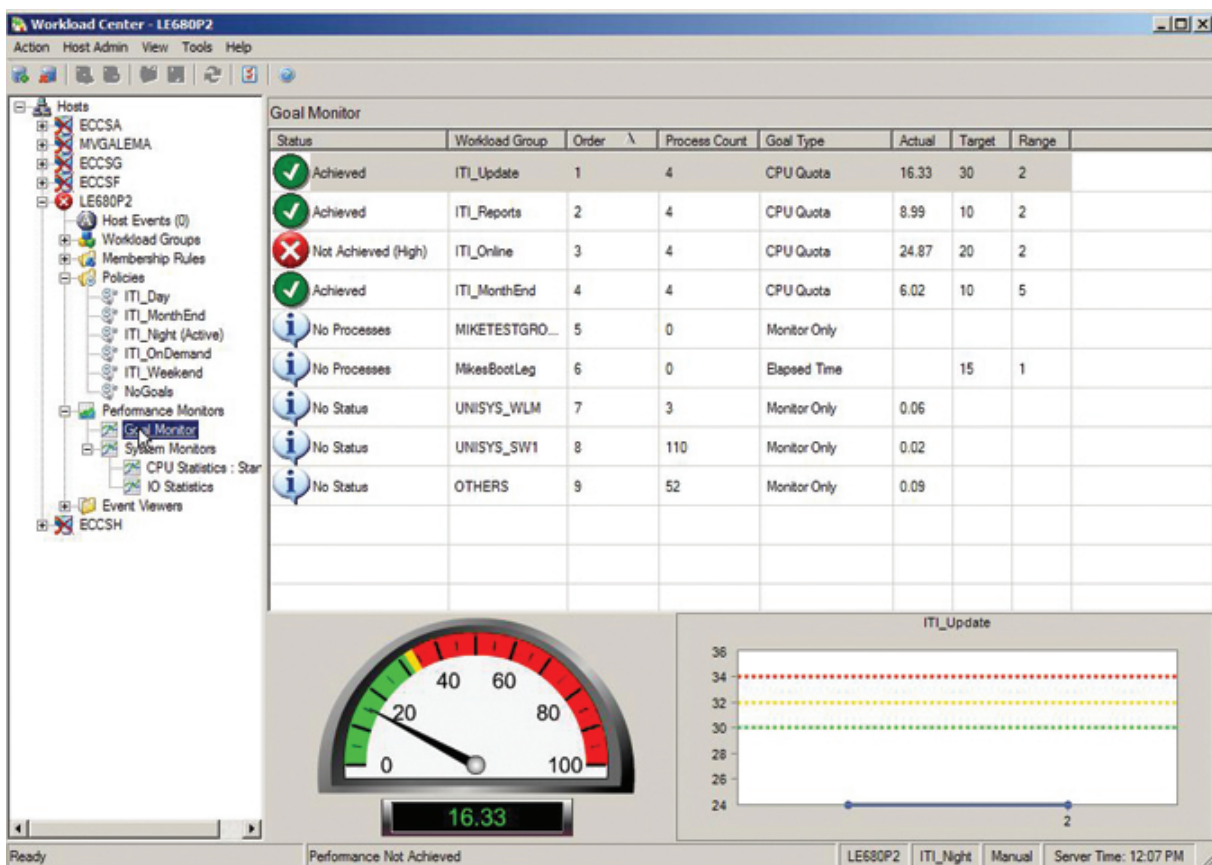
Nightly production completion: When there are overnight batch runs that simply must finish before a certain time, Workload Manager can help make sure that happens. The Elapsed Time performance goal allows a site to specify a desired completion time for all tasks in a Workload Group – starting when the first task begins and ending when the last task completes. The goal uses “baseline statistics,” values that indicate the total CPU time, I/O operations, and database operations expected to be used and/or performed by all tasks in the group (or job.) No more unpleasant surprises first thing in the morning when this goal is in place.

Online/batch resource balancing: For operations with a dynamic mix of online transaction processing with reports and other batch jobs, it can be a challenge to keep background work from stealing too many system resources. Using Database Transaction and Response Time performance goals is a good way to ensure that real-time transactions get the resources they need to meet service-level objectives – and keep online users happy and off the phone with your operations staff! >>

Benefits of Workload Management

- Improved ability to align IT resources to business goals
- Newfound facility to adapt and respond to changing environments
- Reduced operations management costs

Sample Workload Manager Display



Monitor, then Control

An easy way to get started with Workload Management for ClearPath MCP is by using the Monitor Only management mode. With this approach, you assign additional performance goals to groups, such as a quota, reservation, average response time, and batch elapsed time objectives, and monitor how well the group performs against them. Workload Management collects resource usage data about your various Workload Groups, but does not exert any control over their processes. This insight helps you evaluate and fine tune your settings before making the transition to having the solution actively balance the system.

And, you're never locked in – even when Workload Management for ClearPath MCP is in control of system workloads and resources. If there's ever a situation where you're not happy with Workload Management's oversight, balancing mode can be immediately turned off and your original system control is automatically reinstated.

You Have It. Why Not Use It?

Workload Management for ClearPath MCP is included with your operating environment package and is available for all ClearPath servers that support MCP Release 12.0 and above.

What's more, we offer many resources to help you get started, including:

- **Presentation:** A great introduction to how Workload Manager works (slides 10-27), as well as the business benefits; [*Meeting Service Level Requirements with Workload Manager*](#)
- **How Tos:** Bite-size chunks of training that you can [download](#) and view on your desktop. Topics include:
 - *Workload Center Layout and Navigation:* A simple tour through the major Workload Center screens
 - *Adding a Host to Workload Center:* An explanation of how to connect Workload Center to a ClearPath MCP host
 - *Host Status Icons Description:* A brief explanation of the different status and state icons used by Workload Center
 - *Policy Definition and Use:* A description of the different types of Policies and their attributes
 - *Membership Rules:* A description of Membership Rules that segment a system's workload into Workload Groups
 - *Runaway Program Detection:* A description of the setup and display of runaway program detection limits and options
 - *Balancing Demonstration:* A demonstration of Workload Group performance control and balancing
- **Technical white paper:** A nice introduction to the various workload management settings; [*Workload Management for ClearPath MCP*](#)

Visit the [Workload Management for ClearPath MCP section](#) of the eCommunity to find these and other resources. And when you're ready to get started, ask your sales rep about services that can help you gain maximum benefit from this solution.



ClearPath Dorado System Provides Customers with Impressive Uptime and Reliability

OS
2200

With extremely high-volume processing requirements, the airline industry must continuously and reliably handle large numbers of transactions per second to ensure customer satisfaction. And, it's in such an environment where Unisys ClearPath Dorado Servers play a key role. Run by the Unisys Hosting and Integration Services organization, two Dorado systems support USAS – a Unisys passenger and cargo management outsourcing service – for a number of top airlines worldwide.

Housed at the Unisys Eagan data center, each Dorado system supports a dedicated geographic region – one for the Americas and one for the rest of the world (ROW). Recently, the ROW server hit a major milestone: It ran for 1,000 days – nearly three years – without requiring a single reboot! And during that time, the system processed some 2.4 billion transactions.

This milestone illustrates the ways in which the ClearPath environment delivers significant advantages over open systems environments, where updates are required on a quarterly basis for Microsoft Windows and on an annual basis for Linux. And each time an update occurs, a reboot must be performed. “Since ClearPath systems require no rebooting during the update process, they provide levels of availability and reliability far beyond open system alternatives,” explains Unisys Technical Specialist Michael Cort Loran.

Loran is quick to point out additional benefits of the ClearPath Dorado system supporting this outsourcing environment: “By leveraging Unisys Open/OLTP software, we’ve given our airline customers easy, browser-based access to their mission-critical applications.”

Through this contemporary service-oriented architecture (SOA) approach, Unisys has been able to deliver fast, secure messaging to airlines – ensuring the responsiveness they all need to quickly and effectively process large numbers of transactions and meet customer demands.

“By leveraging Unisys Open/OLTP software, we’ve given our airline customers easy, browser-based access to their mission-critical applications.”

TravelSky, EMC Insurance, and Copercana Count on ClearPath Servers

TravelSky Technology Limited Enjoys Mission-Critical Application Security and Enhanced Support for Uninterrupted Operations

TravelSky, the leading provider of IT solutions for China's air travel and tourism industries, needed to expand the capacity and security of its core ClearPath Dorado mainframes in advance of the spike in travel brought upon by the 2008 Beijing Olympic Games.



TravelSky worked with Unisys to implement two ClearPath Dorado 380 servers – one each for its production and backup environments. The upgrade included Unisys Extended Transaction Capacity (XTC), a clustering technology for OS 2200 systems, which allowed TravelSky to pair the new Dorado systems with its existing Dorado 280 servers to achieve higher levels of availability, manageability, and responsiveness.

Thanks to increased reliability and performance in its ClearPath environment, TravelSky easily accommodated a 20% increase in peak processing requirements, while enabling real-time data delivery and secure, continuous business operations.

Please visit the eCommunity to read the full [TravelSky case study](#).

EMC Insurance Companies Sees a Secure Future on the Web

Realizing that expanding its portfolio of Internet-based services meant harnessing greater processing power and enhanced business continuity capabilities, EMC Insurance Companies turned to longtime partner Unisys for a robust, web-ready server and development platform.

EMC chose a ClearPath Dorado 790 Server featuring a Pay-for-Use business model and metering technology – as well as innovative Unisys Business Information Server (BIS) and Internet Commerce Enabler (ICE) development tools – to support its burgeoning web presence. The solution helps EMC quickly respond to market trends by putting the processing power where it's needed – instantly.

What's more, with dual production data centers supporting a growing volume of web transactions – and providing enhanced disaster recovery (DR) options – EMC was able to avoid a costly data center move and improve its business continuity position.

Please visit the eCommunity to read the full [EMC Insurance Companies case study](#).

Copercana Deploys Innovative Technology to Reduce the Cost of IT Services

Copercana, one of Brazil's largest sugar cane planters' cooperatives, was under mounting pressure to meet its cost-cutting goals – while simultaneously improving the provisioning and management of the IT resources that enable real-time access to critical business applications. >>

Working with Unisys, Copercana migrated its custom-built ERP system to a new ClearPath Libra 400 platform, implemented a remote DR site, and deployed Unisys uAdapt and uOrchestrate software on a virtual environment comprising Unisys ES7000 Model 7405R servers and VMware® technology. Together, these components helped Copercana provide continuous and more responsive service to its customers – and more effectively provision both physical and virtual assets.

In addition, by automating over 400 manual processes, Copercana optimized many internal operations, helping the cooperative better control costs. And with a new virtual environment, Copercana will also be able to realize a projected \$50K annual savings in licensing fees and staffing requirements.

Please visit the eCommunity to read the full [Copercana case study](#).

Unisys Launches New ClearPath Solutions in Virtual World of Second Life

This past May, Unisys hosted a major ClearPath launch event in an unprecedented location. It didn't happen at a sunny Caribbean resort, secluded mountain lodge, or swanky casino. Instead, it took place in our Alpine Executive Center, a virtual event space located in the online community Second Life. Without booking travel arrangements or taking time out of their busy schedules, attendees were transported to a world where they had 24x7 access to their peers, Unisys personnel, and valuable launch-related information. And while the activities may have been virtual, the details of a major ClearPath release were real.

If you'd like to see some highlights of the launch, please watch this [short video](#).



Storage and Software News

Cost-effective SafeGuard Solution Now Available for ClearPath MCP Systems

We are pleased to announce the availability of a new SafeGuard solution featuring EMC® CLARiiON® CX Splitter Drivers for a wide range of ClearPath Libra and FS Series servers – a move that makes data replication using [Unisys SafeGuard Duplex](#) more affordable than ever. Designed to help you protect the full breadth of your IT infrastructure, SafeGuard Duplex provides comprehensive, flexible, long-distance recovery for multiple operating and storage environments.

Offering write-splitting capabilities for CLARiiON CX storage arrays, these newly qualified drivers enable the replication of resident CLARiiON CX data volumes across any distance, without impacting applications or the primary I/O path. And best of all, leveraging SafeGuard Duplex with the CLARiiON CX Splitter Drivers eliminates the need to implement SANtap fabric splitting hardware – helping you optimize your business continuity position at a much lower total cost of ownership.

The CLARiiON Splitter drivers are qualified for the following platforms:

- Libra 400
- Libra 585/595
- Libra 680/690
- Libra 780/790
- Libra 4000
- FS 1600
- FS 1700
- FS 1800

To learn more about how you can benefit from the combination of SafeGuard Duplex technology and CLARiiON CX Splitter Drivers, please contact your Unisys sales representative.

European Telco Giant Modernizes and Streamlines Backup with VTL

When a leading European telecommunications provider and ClearPath Dorado Series mainframe customer realized that its large, aging physical tape library could not keep pace with demanding backup schedules and a growing need for offsite data storage, the company enlisted Unisys to modernize its tape storage practices. Unisys designed a progressive, virtual tape library (VTL) solution comprised of Dynamic Solutions International (DSI) VTL Head Units, EMC CLARiiON storage and MirrorView® replication technology, and Formula Consultants Inc. (FCI) STAR tape management software.

Currently in production in one of the company's five ClearPath Dorado partitions, the new VTL solution has already yielded considerable results. For example, the weekly FAS SAVEALL command, which used to take 1.5 hours to complete, now runs in about 15 minutes.

To learn more about Unisys data management and storage options, visit the [eCommunity](#).

For more information about DSI, please visit dynamicsolutions.com.

To learn more about FCI, please read the [Partner News article](#) or visit www.formula.com. >>

New Releases of dbaTOOLS and TeamQuest Products

Delivered in conjunction with the recent release of MCP 12.1 – but available as a separate order – the latest versions of dbaTOOLS and TeamQuest will help organizations fine tune their MCP operating environments.

The Analyzer and Monitor functionality included in dbaTOOLS release 12.1 helps you monitor, control, and tune Enterprise Database Server (DMSII) databases. The latest version of dbaTOOLS Monitor includes valuable new capabilities for monitoring Remote Database Backup (RDB) performance and acquiring information about the individual programs using a database.

TeamQuest releases 52.014 and 53.013 offer a wide range of performance monitoring products – including an enhanced version of TeamQuest SMFII, which offers expanded performance management capabilities for ClearPath MCP servers.

Calendar

There are many learning opportunities available to you. Please be sure to check the Webcasts & Events section of the [eCommunity](#) for the latest information.

What	Where	When
Data Center Transformation – Adapting to a Changing World	Unisys Executive Center for Innovation, Blue Bell, PA	September 17, 2009
OS 2200 Best Practices Workshops	Brussels, Belgium	September 24, 2009
MCP Best Practices Workshops	Houten, Netherlands Brussels, Belgium Milton Keynes, UK Paris, France	September 29, 2009 September 30, 2009 October 7, 2009 October 13, 2009
ClearPath Briefing and OS 2200 Best Practices Workshop	Stockholm, Sweden	October 15, 2009
DACH User Event and OS 2200 Best Practices Workshop	Basel, Switzerland	October 22-23, 2009
UNITE Annual Technology Conference	Hyatt Regency Minneapolis , Minneapolis, MN	November 8-11, 2009
Business Information Server (BIS) Symposium	Unisys Roseville, MN	November 12-13, 2009

Partner News: Formula Consultants Inc.

How does a software development and consulting firm stay on top of technology advances – yet still maintain high levels of responsiveness to customers? According to Joe Dale, president of Anaheim, CA-based Formula Consultants Inc. (FCI), two things are essential: A talented development and support staff and in-house mainframe capabilities that span the range of technologies currently used by customers.

Next-Generation Platform Provides Leading-Edge Test and Development Environment

“We’ve been a Unisys partner for over 20 years,” says Dale. “During that time, we’ve made a point of running our operations on the latest platforms, which has allowed us to deliver such innovative solutions as our System for Tape Administration and Reporting (STAR-1100) tape management product to our Unisys ClearPath OS 2200 customers.”

By being among the first U.S. customers to deploy a ClearPath Dorado 4080 Server, which features Unisys innovative Next-Generation Server Architecture, FCI has demonstrated this commitment. The ClearPath Dorado 4080 server runs the OS 2200 operating system and application software on Intel® Xeon® processors, moving the server architecture toward industry standards.

Dale explains how FCI has put this new mainframe environment to use: “By installing the ClearPath Dorado 4080 Server, we’ve been able to take advantage of its support for high-speed channels, which enables attachment of modern virtual tape libraries (VTLs) using the latest interfaces. With our new server, we’ve adopted a platform that is functionally equivalent to the Dorado Servers at customer sites that use tape libraries from Dynamic Solutions International (DSI) and Sun Microsystems. What’s more, the performance and stability of our new Next-Generation Server Architecture based platform provides a strong foundation for testing other FCI software products, including our new Intrusion Detection System (IDS-1100).”

Visit the eCommunity for more information about the [ClearPath Dorado 4080 Server](#).

To learn more about FCI, please visit www.formula.com.

About STAR-1100

STAR-1100 is a complete system that helps Unisys ClearPath OS 2200 users automate and manage their tape resources. The solution works in conjunction with FCI’s STAR Library Manager to automate operation of DSI VTLs. It also provides support for Sun’s CSC software, which enables interoperability between Sun tape libraries and ClearPath Dorado systems.

Specifications are subject to change without notice.

© 2009 Unisys Corporation.
All rights reserved.

Unisys and the Unisys logo are registered trademarks of Unisys Corporation. Eclipse is a trademark of Eclipse Foundation, Inc. EMC, CLARiON, and MirrorView are registered trademarks of EMC Corporation in the U.S. and other countries. Intel and Xeon are registered trademarks of Intel Corporation. Linux is a registered trademark of Linus Torvalds in the United States, other countries, or both. Microsoft and Windows are registered trademarks of Microsoft Corporation. JBoss is a registered trademark and JBoss Application Server is a trademark of Red Hat, Inc. and its subsidiaries in the U.S. and other countries. Java and all Java-based trademarks and logos are trademarks or registered trademarks of Sun Microsystems, Inc. in the U.S. and other countries. VMware is a registered trademark of VMware, Inc. All other brands and products referenced herein are acknowledged to be trademarks or registered trademarks of their respective holders.