

ClearPath Connection

UNISYS
imagine it. done.

December 2008

A quarterly newsletter for Unisys ClearPath customers

Contents

2 **2008 – A Dramatic Year!**

Bob Tillotson, head of Unisys Global ClearPath Sales, offers his perspective on the ClearPath program in 2008 and going forward into the New Year.

4 **Eclipse IDE: More than Java Development**

The Eclipse™ IDE is ready for prime-time mainframe development. COBOL, ALGOL, PLUS, Java, and more. New and experienced programmers will get a productivity boost from Eclipse.

7 **The City of Detroit Adopts a New Way of Thinking with VTL**

Learn how this ClearPath customer is benefiting from the use of a DSI virtual tape library solution.

8 **How Much Fun was Your Last IT Audit?**

MCP

Find out how auditors and security personnel can gain easy access to information – reducing the burden on IT staff.

11 **Tech Corner: Take a Serious Look at the Eclipse IDE**

**OS
2200**

Attention OS 2200 developers! Learn what Unisys is doing to make the Eclipse IDE a powerful tool to support OS 2200 application development, including COBOL and PLUS programming.

16 **ClearPath Product News**

New system monitoring software headlines the latest news for ClearPath systems.

17 **Calendar**

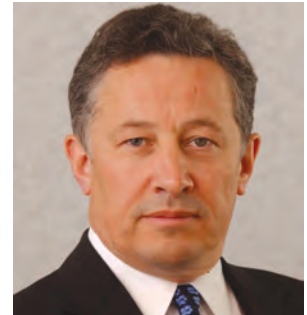
Check our calendar for the latest information about upcoming learning opportunities and events.

Not a subscriber of ClearPath Connection?

Don't miss the next issue – [sign up in the eCommunity.](#)

2008 – A Dramatic Year!

By Bob Tillotson, Vice President and General Manager, Global ClearPath Sales



2008 has been a dramatic year. As financial and economic fluctuations leave their marks – challenging everyone to consider the impacts, consequences, and opportunities that lie ahead – companies are looking to maintain a balance between nurturing long-term projects and responding to new situations with radical change. In times like these, we tend to very quickly rediscover what has real value and what does not, and we're reminded of the importance of trust, relationships, and good judgment. These factors have all come into play for the ClearPath program in 2008.

Soliciting Input from ClearPath Customers

Timing has been on our side this year. In order to ensure that we were listening carefully to our ClearPath customers, we had commissioned a piece of independent client research. The results reminded us that our strengths come from our systems' reliability, scalability, and quality; the excellence and dedication of our technical support staff at all levels; the knowledge of our experts; the value of long-term relationships; the commercial value derived from our systems and development tools; and especially from metering. We also learned that we needed to be more visible as a company, and that it was important for us to demonstrate our long-term technology commitment, add new young talent to our loyal long-standing experts, communicate our successes – and to simply go out there and deliver financial success and stability for the future.

The timing of this input was fortunate, and in the midst of all the market movements, we heard the message loud and clear from our clients. To fill out the picture, we decided to seek input from all quarters of the internal ClearPath community, and the responses dovetailed with those of our clients. As we speak, this combined input is shaping our investment plans and actions in real time, and we expect to be judged quickly on our actions and deliverables.

Continuing a Tradition of Technology Excellence

2008 has also been a year of delivering long-term, strategic projects, including:

- New high-end CMOS platforms, with the Dorado 780 and 790
- New Dorado and Libra 4000 Intel® processor based ClearPath platforms
- New OS levels with MCP 12.0 and OS 2200 11R3

These headline deliverables demonstrate the excellence of our technology across the board, in addition to our ongoing ability to deliver world-class, high-end performance and reliability to the most demanding transaction-based businesses.

But, we didn't stop there. With new releases of Business Information Server (BIS) and Agile Business Suite, we continue to exploit our core competence in advanced development technologies that enable clients to create and deploy mission-critical applications with greater speed and efficiency. With embedded, industry-standard technologies, new staff with contemporary skills can be quickly and easily trained to use these tools, thus helping to close the skills gap. >>

Finding Ways to Deliver More Value

Despite the market turbulence, we have made some radical decisions. We are working at extending our metering program to provide clients greater flexibility in responding to short-term economic challenges. At our largest clients worldwide, we are meeting the demand for dedicated, on-site personnel to ensure the availability of instant, expert advice. We are attacking costs across the board to ensure clients remain competitive and can reduce their expenditures accordingly. We are looking to deploy more fully-populated platforms to assist clients with merger activity and rapid growth, so they can easily scale for massive increases in power. We are investigating new support capabilities that build upon our current call-home and online, remote support infrastructure. Our 7x24, follow-the-sun support has been utilized for years, but we continue to ask the question: how can we extend it for a wider range of client data center systems to further reduce costs and risk?

Investing in the Future

To address the long term, we have also embarked on new technology R&D that will deliver higher-end performance to clients who are realizing that scaled-out data centers are not as agile and cost effective as modern, open mainframe systems. Today's ClearPath technology roadmaps extend into the middle of the next decade, and we are continually incorporating emerging technologies to handle the growth and reliability metrics of our largest clients in the Commercial, Airline, Telecommunications, Financial Services, and Government sectors.

We are making the decisions that deliver value not just now, but well into the future.

So, in sticking to the course on long-term projects, responding to short-term market challenges, and making some radical decisions about the future, we also have to ensure that dedicated staff are available, motivated, and trained. We are building new initiatives to source the best university graduates, cross-train them on emerging business and technology capabilities, and then induct them into a demanding world of quality service. We plan these new hires to be the trusted advisers of the future, continuing to build long-term relationships with our valued clients.

2008 has been a year to remember. Against all the odds of the market, the ClearPath business has excelled and beaten all the targets we set for ourselves. We have been rewarded with long-term contracts from major clients worldwide – many extending to 2015 and beyond. We understand that working in this challenging, high-end environment is about commitment, trust, and judgment, and it is with those tenets in mind that we thank our loyal clients for putting their trust in ClearPath now – and into the next generation.

Eclipse IDE: More than Java Development

True or false?

- Eclipse is more than a Java IDE
- Eclipse has relevance in a mainframe development world
- Eclipse is ready for prime time

The answer to all three statements is emphatically TRUE. And, now it's particularly so for development teams that build and maintain applications running under the ClearPath OS 2200 and MCP operating environments. Whether you're coding in COBOL, ALGOL, PLUS, or Java – Unisys innovative Eclipse IDE All-in-One package has got you covered!

Eclipse: *The IDE for Unisys ClearPath Developers*

By design, Eclipse itself is a deliberately skinny foundation with minimal functionality. It is built to be extended via the concept of plug-ins, which are code bundles that are loaded and used according to a specified configuration. The basic Eclipse structure defines extension points, which allow new modules (plug-ins) to extend the menus and offer more services.

Developers working within the Eclipse IDE can pick and choose the features they want to use from the wide, open-source world of plug-in options. The choices are nearly endless. Check out <http://www.eclipseplugincentral.com/> for an extensive menu of available plug-ins in a broad range of categories, including application management, build and deploy, graphics, profiling, and testing.

Unisys is making Eclipse a major focal point for development of ClearPath applications. In fact, we plan to eventually replace current, proprietary solutions, such as Programmer's Workbench, with this open, industry-standard environment. >>

What is Eclipse?

Many people have the impression that Eclipse is just for Java. While it does offer a superior Java development environment, Eclipse is, in fact:

- A language-neutral, integrated development environment (IDE) for building, deploying, and managing software across the entire software lifecycle
- An IDE framework that is easily extended via the concept of plug-ins
- Supported by an open source community focused on building more functionality for the IDE
- A set of more than 60 open source projects

To learn more about the history and current status of Eclipse, visit eclipse.org.

Why is Eclipse So Popular?

- **Price:** The Eclipse Public License allows for the use, modification, and distribution of the software without charge and without the requirement to supply updates to the originator
- **Architecture:** The Eclipse IDE's architecture was built from the ground up to be easily extensible
- **Feature/Functionality:** Eclipse offers very robust set of development capabilities, extending all the way to integrated program launch and debug features
- **Availability:** Eclipse is made available like any commercial software product, including a set release schedule controlled by the Eclipse Foundation
- **Choice:** The Eclipse IDE runs on a range of operating system platforms, including Microsoft® Windows®, Linux®, and MAC OSX

We have several objectives with our Eclipse offering. The first is to provide industry-standard IDE assistance for developing Java applications that use ClearPath assets. To this end, Unisys provides industry-standard Resource Adapters (RAs) for ClearPath database and transaction access and the Eclipse IDE offers features that assist with development of these applications. For both ClearPath platforms, there is an RA that supports Distributed Transaction Processing Services (DTP RA). For ClearPath OS 2200 environments, we support access to Business Information Server, DMS, and RDMS databases, as well as to TIP/HVTIP transactions. For ClearPath MCP, there are RAs for Enterprise Database Server (DMS II) and COMS.

Our second major objective with Eclipse is to provide the ability to develop other 3GL applications for ClearPath environments using the same framework that can be used for Java and other non-ClearPath hosted applications. For ClearPath OS 2200 environments, we enable development of COBOL, Java, and PLUS applications, as well as the use of TelNet and CMplus. For MCP, we support COBOL 74/85 and ALGOL, as well as the use of WFL and SURE. And by moving ClearPath development activities into Eclipse, programming teams will gain the additional benefits of a streamlined build and test process with a common IDE for all projects, regardless of language.

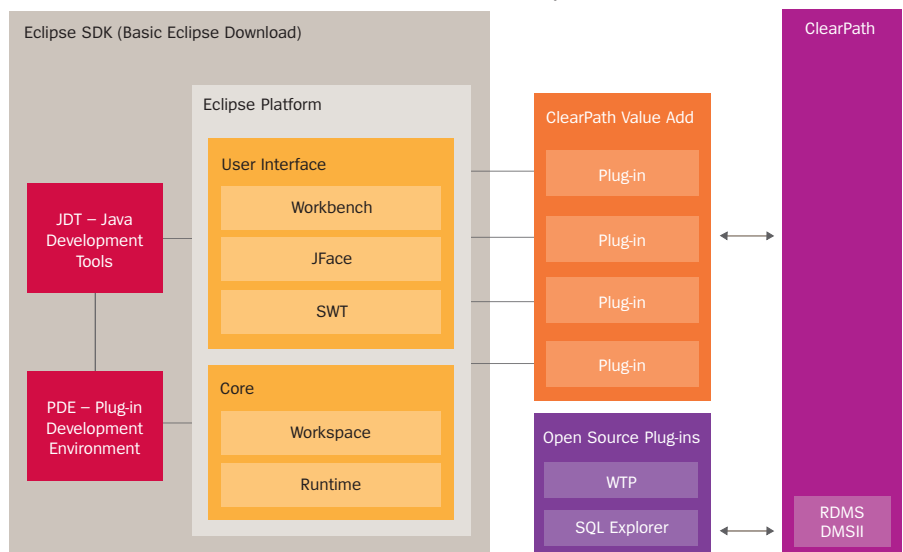
Unisys Eclipse All-in-One Packages

The Unisys engineering team is fully invested in contributing to the open source movement in ways that benefit our ClearPath customers. We are directing our resources to creating ClearPath specific plug-ins that naturally build on the Eclipse IDE foundation and provide capabilities that make sense for developers on ClearPath systems. To that end, Unisys has built and released Eclipse plug-ins that enable development for ClearPath OS 2200 and MCP operating environments using the Eclipse IDE, as well as integration of ClearPath based assets in a service-oriented environment.

So, what is Unisys providing exactly for Eclipse? An All-in-One package comprised of the following:

- The basic, currently released Eclipse IDE
- A selection of open-source plug-ins that we see as particularly valuable in a ClearPath development environment, such as the Eclipse Data Tools Project and Web Tools Project
- Unisys plug-ins, some of which are modified versions of open source plug-ins and others built by Unisys, which enable the development of applications specifically for ClearPath and access to ClearPath assets (databases and transactions)
- An Application Development Guide to help you get started >>

Common Architecture of ClearPath IDEs for Eclipse



Equally important, the components of the Unisys Eclipse All-in-One package are:

- Integrated and tested by Unisys engineering
- Packaged and released as a part of the OS 2200 and MCP IOEs
- Supported¹ via Unisys Support at no additional charge

Note: If your organization is already using Eclipse, then you don't need the All-in-One package and can simply use the Unisys modified and developed plug-ins in your existing environment.

For more detailed information about the ClearPath OS 2200 IDE for Eclipse, see our [Tech Corner](#) article in this issue of ClearPath Connection. (And, look for a similarly in-depth article about the ClearPath MCP IDE for Eclipse in the next issue of this newsletter.)

Easy, Integrated, and Innovative

With the Unisys All-in-One packages, it's never been easier to get started using the Eclipse IDE. Whether you're an experienced ClearPath programmer or a new college grad just starting out, it's time to start exploring the technical and business benefits of this powerful toolset. You can take advantage of the many plug-ins available from the open source community and Unisys own plug-ins that are designed to help you get maximum value from your current ClearPath investment.

To learn how to download and install the All-in-One package for OS 2200 or MCP, please refer to the eCommunity:

- [ClearPath OS 2200 IDE for Eclipse](#)
- [ClearPath MCP IDE for Eclipse](#)

We are also looking for developers to join our early adopter program. Please contact:

- OS 2200: Melanie Wolbeck (Melanie.wolbeck@unisys.com)
- MCP: Pamela Becker (Pamela.Becker@unisys.com)

¹ Support statement: Unisys will make reasonable efforts to work with the Open Source community to resolve problems. Unisys developed content falls under normal support policies.

The City of Detroit Adopts a New Way of Thinking with VTL

VTL, or virtual tape library, represents a new way of thinking about backups – supplementing and even replacing current tape backup solutions with low-cost disk technology that “looks and acts” like a traditional tape device.

With a VTL, data is backed up on disk drives just as it would be on tape, but at a much faster speed, thereby improving the performance of backup and recovery processes. Unlike tape backups, VTL makes it possible for organizations to keep more data near-line for rapid access and offers numerous recovery points for faster restores. VTL solutions can also be used to provide additional capacity, decrease the overall storage footprint, and reduce tape drive and cartridge library costs.



To learn more about how a Unisys ClearPath customer was able to leverage VTL, take a look at a recent [case study featuring the City of Detroit](#). The city deployed a Dynamic Solutions International (DSI) multi-tiered VTL solution – the DSI9982 Virtual Tape Library – to support its heterogeneous IT infrastructure comprising Unisys ClearPath MCP, Microsoft Windows, HP-UX, and Novell operating environments. The solution gives the City of Detroit a host of benefits, including:

- Significant reduction in data center floor space
- New levels of automation requiring much less IT oversight
- Faster, more reliable data restores
- Robust offsite DR for rapid recovery
- A better mechanism to bridge the gap between old and new tape technologies

Unisys offers a range of storage options from DSI, Sun Microsystems, and other partners. To learn more about how your organization can benefit from a virtual tape library solution, contact your Unisys sales executive or visit the [Unisys](#) or [eCommunity](#) websites.

How Much Fun was Your Last IT Audit?



Any review of the IT function, whether conducted by an internal or external auditor, places an unwelcome burden on IT staff members. Preparing reports, answering questions, identifying and implementing remediation strategies – it all adds up to time away from other priorities.

But, the stark reality is that audits aren't going away. In fact, they have become more stringent in the wake of regulations, such as the [Payment Card Industry \(PCI\) Data Security Standard](#), the [Gramm-Leach-Bliley Act \(GLBA\)](#), the [Sarbanes-Oxley Act \(SOX\)](#), the [Health Insurance Portability and Accountability Act \(HIPAA\)](#), the UK's [Combined Code on Corporate Governance](#), and the [Foreign Corrupt Practices Act](#).

The size of your organization and nature of your business doesn't make you immune, either. For example, the [Fair and Accurate Credit Transactions Act \(FACTA\)](#) of December 2003 applies to organizations that possess or maintain consumer information for business purposes – essentially all organizations. Small, medium, and large enterprises are all subject to review, as are private, public, and government entities.

One way to get a leg up on audits is by being proactive, not reactive. That means finding ways to integrate tasks that assess risk and identify problem areas into the regular routine – so that you are constantly “preparing” for that next review.

You're probably thinking, “I have enough on my to-do list, where am I going to find the time to be proactive about IT audits?” The answer? Let software do the heavy lifting – with SafeSurvey and SecureAudit solutions, which are available from Unisys and were jointly developed by Unisys and [Locum Software Services Limited](#).

Improve Your Security Intelligence: SafeSurvey

The ClearPath MCP operating environment has been recognized for its very robust security architecture. That said, you still must take care to configure and manage the environment in ways that prevent unauthorized access and misuse – and SafeSurvey helps you do just that.

SafeSurvey is a security assessment tool specifically designed to evaluate Unisys ClearPath MCP based systems. It provides a comprehensive set of capabilities to help your organization, as well as company and external auditors, use system-generated data to identify, evaluate, and manage risk. SafeSurvey can even help you measure compliance with your defined security policy. Run on a regular basis, the tool keeps you and your management informed of the current status of the security environment on your ClearPath MCP-based systems. >>

For example, SafeSurvey can assess the strength of users' passwords, highlight privileged usercodes, and evaluate system configurations, such as the number of ports and the services that have access to them. SafeSurvey retains security snapshots that can be used for comparison to demonstrate improvements over time. It extracts and reports in the areas of:

- Userdatafile analysis
- Password penetration tests
- COMS Cfile analysis
- Security configuration analysis
- Disk file analysis
- Guardfile analysis
- TCP/IP connections
- System security policy compliance



SafeSurvey's System Policy report highlights how well your ClearPath MCP system conforms to your stated configuration policies, which is particularly helpful for sites that have multiple systems and want to enforce a consistent set of standards across all of them.

Designed with the needs and skill level of IT auditors in mind, SafeSurvey is easy to use and provides the kinds of reports that auditors demand – without any manual effort on the part of your IT team. Best of all, audit staff members don't need to be MCP savvy in order use the information SafeSurvey provides.

Simply put: SafeSurvey provides security intelligence. With regular use, it gives you the peace of mind that comes from the knowledge that your ClearPath MCP systems are in compliance with your organization's security policy. For a detailed overview of the product, see the [technical presentation](#) in the eCommunity.

Ensure Security Compliance: SecureAudit

SecureAudit is an important tool for security administrators, auditors, and regulators who are responsible for tracking and reporting on security events and violations. It works from data captured in the SUMLOG file, which is used by the MCP to record all manner of system activities.

As with SafeSurvey, SecureAudit reports are designed for people who don't have an intimate knowledge of the inner workings of the MCP. For example, the use of technical jargon has been eliminated. What's more, each report is highly relevant – targeting a specific security issue and presenting information in a concise, highly readable format. In addition, reporting has been optimized for fast execution so that information is quickly and efficiently processed. With all these capabilities, SecureAudit provides powerful support for internal and external audits, as well as forensic analysis. >>

SecureAudit offers standard reports on a wide range of activities, events, and conditions, including:

- Security violations
- Logon violations
- Privileged actions
- File status changes
- Run-time usercode changes
- And more

SecureAudit provides the kind of detailed information about your ClearPath MCP system that used to require the skills of an MCP guru to develop. For more information about SecureAudit, see the [technical presentation](#) in the eCommunity.

Try SafeSurvey and SecureAudit Today

It's easy to take these powerful tools out for a quick test drive. Trial versions of the SafeSurvey and SecureAudit software, providing summary-level reporting, are included on your MCP 11.1 and 12.0 release media.

Tech Corner: Take a Serious Look at the Eclipse IDE

By Dan Nissen, Engineering Manager, Unisys Roseville

If you are like most OS 2200 developers, you're seriously proficient in your language of choice, whether it be COBOL, C, PLUS, or maybe even Java. And, you're no doubt very well-versed in the ins and outs of application development, build, test, and deployment in the ClearPath OS 2200 operating environment.

So, why should you care about an integrated development environment (IDE), such as Eclipse?

Because Eclipse is being shaped into an IDE that makes sense for OS 2200 development. We are building on the strong foundation of the open source Eclipse base product (and wide world of plug-ins) by adding in functionality that integrates and supports the tools OS 2200 developers depend upon and the common workflows they follow. Our goal for the ClearPath OS 2200 IDE for Eclipse is to enhance your development experience through the use of industry-standard tools – without forcing you to make changes that degrade productivity or deviate from your proven processes.

This Tech Corner is designed to give you a feel for what Eclipse looks like in an OS 2200 world. So please, take a few minutes to learn more about the ClearPath OS 2200 IDE for Eclipse. And then make your own decision about whether or not it makes sense for your organization.

Get a New Perspective(s)

Let's start with a discussion of perspectives. In the Eclipse world, a perspective is the developer's view into the many things on his or her "to do" list. If you're a fan of multi-tasking, you'll love perspectives!

The perspective is comprised of multiple windows in which various activities are performed, such as code edit, error checking, debugging, search, and so on. Most importantly, these windows are linked together so that an action in one can have an effect in another.

Take a look at the screen shot on the next page, which shows a typical perspective for the OS 2200 Project Plug-in for a COBOL developer.

- On the left is the OS 2200 Explorer, which gives you a structured view of your project and the objects in it. What's a project? Well, it's simply Eclipse-speak for a collection of application source files, a mechanism to edit them, and a workfile that holds all the pieces you're working on. It can contain all or just a portion of your application source code, for example. With just a click in the OS 2200 Explorer window, you can navigate to whatever object within the project you wish to view. >>



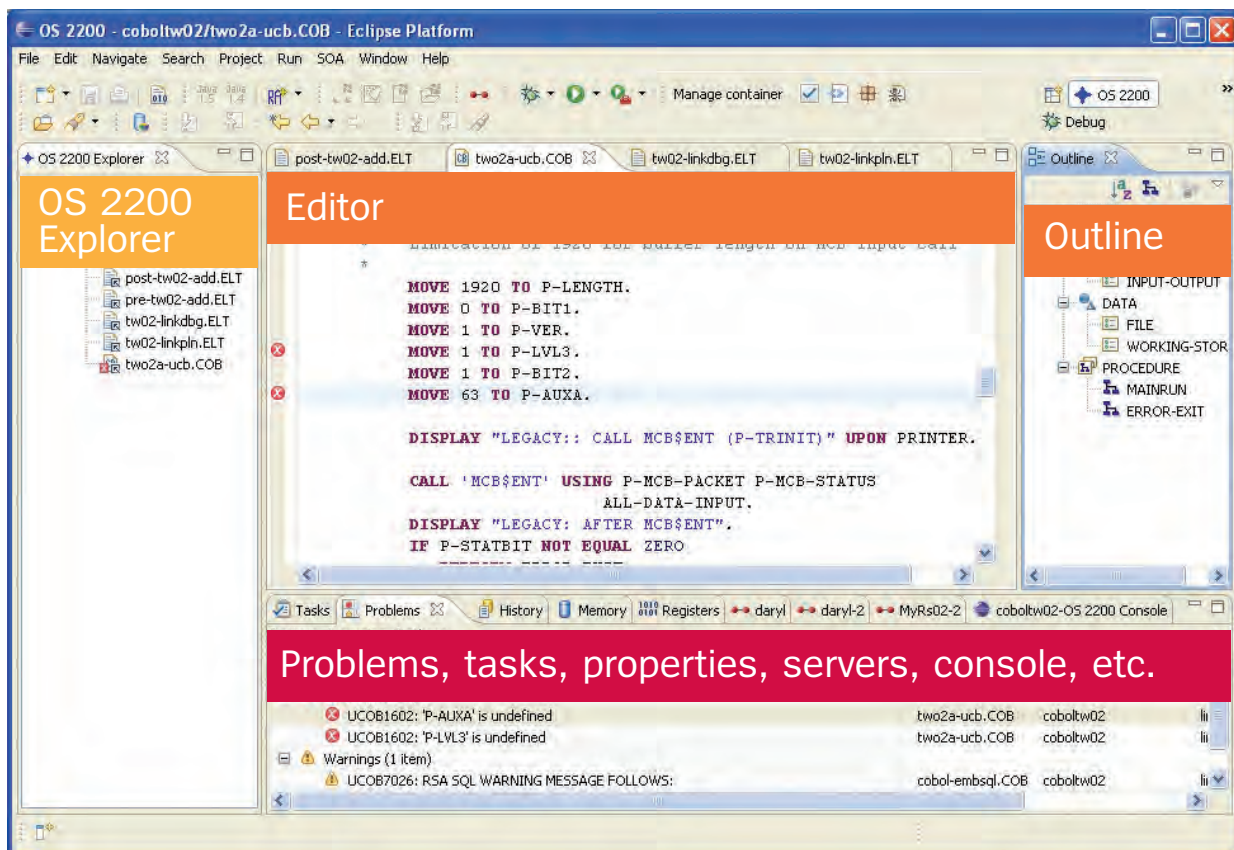
Eclipse 101

Don't forget to read our companion article, [*Eclipse: For More than Java Development*](#), in this issue of ClearPath Connection. It provides an overview of the Eclipse IDE and reviews Unisys engineering efforts to create an easy-to-install Eclipse All-in-One package.



- In the center of the screen is the Editor view, which contains the section of code you're currently working on. Note the tab at the top. You can have multiple tabs at once, each with its own section of code being edited.
- On the right is Outline view of the file you're currently editing. In this case we're editing a COBOL program, so the Outline view shows the major sections in the code and allows quick navigation to specific areas.
- At the bottom of the perspective is a catch-all window with many tabs showing everything from tasks and problems to bookmarks and errors. When a developer clicks on the error log tab and clicks on an error, the Editor window will open right to the line with the problem.

Pretty powerful stuff – don't you think?



Enabling OS 2200 Development From the Eclipse IDE

Unisys provides a number of OS 2200-specific plug-ins for Eclipse that are designed to integrate typical OS 2200 development activities into this IDE. Today, the list of OS 2200-specific plug-ins includes:

- OS 2200 Project Plug-in (which you saw in the previous section)
- OS 2200 Java Application Integrator
- COBOL Editor
- C Editor
- PLUS Editor
- OS 2200 Debugging
- Telnet
- CMplus
- Logging >>

As you've probably guessed from their names, these plug-ins are what give the OS 2200 flavor to Eclipse.

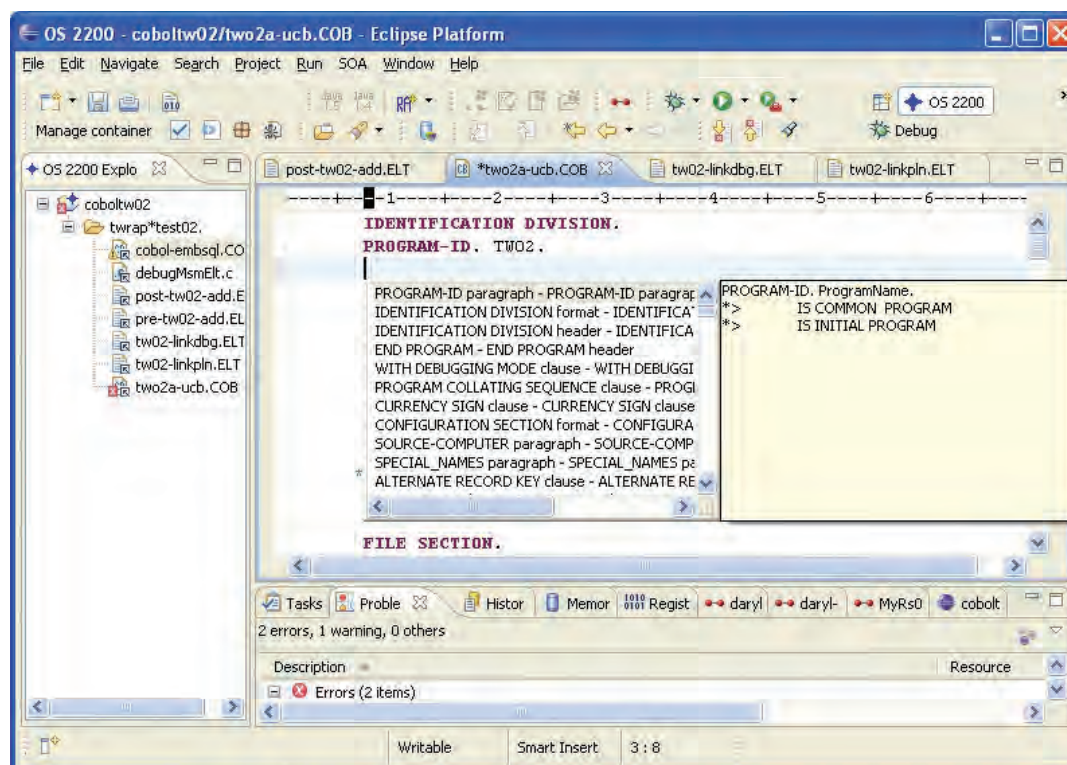
The OS 2200 Project plug-in “knows” how OS 2200 development works – how developers edit, what program files look like, the fact that builds need run streams, that Telnet is used for access and PADS is the debugger, and so on. The OS 2200 Project plug-in is a “traffic cop” that issues commands from the Eclipse environment to the OS 2200 operating environment, understands how to look at the responses, and knows what developers need to see.

The OS 2200 Project provides the mechanism for editing all pieces of your application, with various add-on, language-sensitive editors for COBOL and PLUS, as well as Java and C/C++. With a push of a button in the Eclipse IDE, developers can initiate the build process and review the results. This includes the ability to review compile errors with editor integration to make fixes very straightforward.

Words cannot really do justice to the power of the ClearPath OS 2200 IDE for Eclipse, but the following screen shots provide several examples that we hope will inspire you to give Eclipse a try.

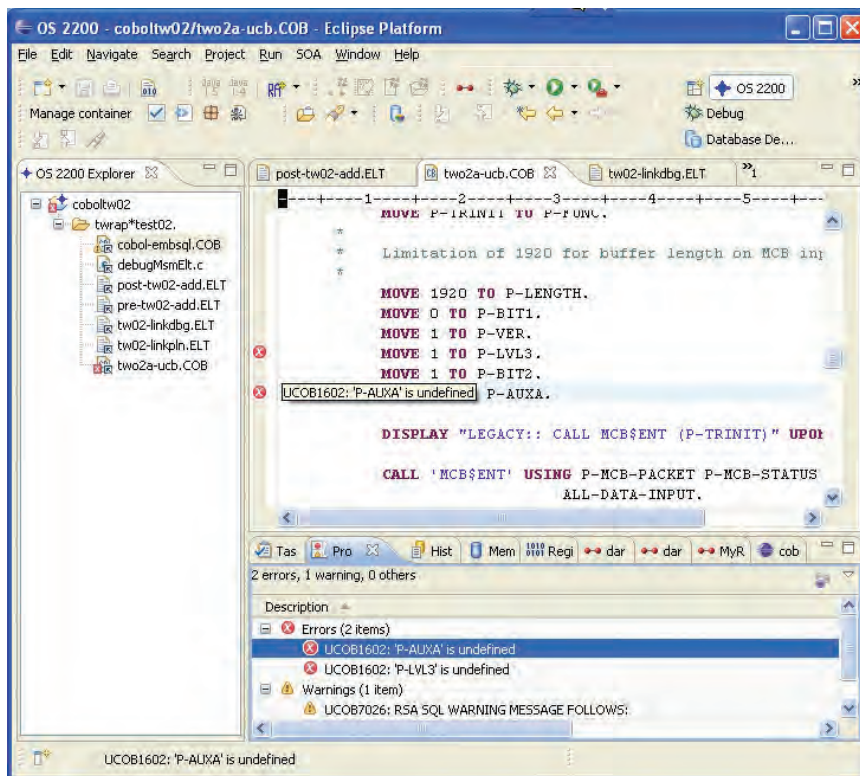
COBOL Auto-Completion

COBOL is known for being a particularly verbose programming language with lots of constructs to remember. The ClearPath OS 2200 IDE for Eclipse with the COBOL Editor provides an auto-completion capability that helps developers get to the right construct quickly. Simply type the beginning of a command, hit Ctrl-space, and the COBOL Editor lists out the available syntax choices. This concept is common to IDEs so it will be familiar to new hires and helps all programmers work faster and more accurately. >>



Detecting Build Errors

The ClearPath OS 2200 IDE for Eclipse integrates development activities on the PC with builds running within the OS 2200 operating environment. As illustrated in the screen shot below, compile errors are shown in the Problem tab at the bottom of the screen and the Editor view is positioned to the line where the error occurred. On the left in the Package Explorer, there's a red circle with an X that indicates all items in the package that have errors to be reviewed and corrected. As the developer clicks on various package items, the Editor and Problems views change accordingly.



Integrated Debugging

OS 2200 developers are familiar with PADS, the Programmers' Advanced Debugging System, which runs via a terminal interface under demand. The ClearPath OS 2200 IDE for Eclipse offers all the functionality of PADS with a much improved user interface. Through the Editor view, developers can watch steps as they are executed. There are also watch windows that show variables and values, Stack Frames, and execution window (Telnet session). And unlike a dumb terminal interface, with Eclipse developers can roll back to examine a response that scrolled off the screen. You can debug your TIP applications, as well as demand or batch runs. The ClearPath OS 2200 IDE for Eclipse takes care of all the groundwork needed to enable debug communication between the IDE and ClearPath mainframe. >>

² Support statement: Unisys will make reasonable efforts to work with the Open Source community to resolve problems. Unisys developed content falls under normal support policies.

Java Application Integrator

For development organizations that want to leverage existing OS 2200 assets into composite applications and/or in a service-oriented architecture (SOA), the Java Application Integrator plug-in is a critical tool. This module generates “wrapper classes” to use with Resource Adapters (RAs) – the connectors to OS 2200 DMS and BIS databases and TIP/HVTIP transactions. It allows you to quickly generate the standard code sequences needed for the RAs and allows you to build the method invocations easily. See our white paper, [*ClearPath OS 2200 IDE for Eclipse – Modern Development for the Mainstream Mainframe*](#) on eCommunity for more about this topic.

To learn more about how one organization is using its OS 2200 transactions in an SOA, see the recent [Georgia Technology Authority case study](#). The GTA project used the Eclipse IDE for development of bi-directional Web Services from existing COBOL transactions running under OS 2200.

Give Eclipse a Try

Getting started with the ClearPath OS 2200 IDE for Eclipse is very simple – download the software from the [eCommunity](#). If your organization is already using Eclipse, then the OS 2200 plug-ins can be added to your existing environment. Otherwise, our Eclipse All-in-One package is the perfect start. It contains the base open source product, selected open source plug-ins, and Unisys modified and developed modules as noted earlier in this article. The All-in-One package has been integrated and tested by Unisys engineering, packaged and released as a part of the OS 2200 IOE, and is supported² via Unisys Support at no additional charge.

ClearPath Product News

Operations Sentinel Level 11.0

Operations Sentinel (formerly SPO) level 11.0 completes the modernization of user interfaces to provide true Microsoft Windows compliant applications. The capabilities formerly provided by Single Point Operations Status are now an integral part of Operations Sentinel.

A key feature in Operations Sentinel level 11.0 are new agents for Microsoft Windows, UNIX®, and Linux platforms. These Resource Monitor agents are centrally administered and represent a major opportunity for ClearPath customers. At very little cost, if any, it's now possible to comprehensively monitor Windows, Linux, and UNIX systems from Operations Sentinel. This presents the opportunity to eliminate licensing for other system monitoring software products. Exceptions caught by the automation are represented as visual alerts – and may also be sent as email, text messages, and audible alerts – routing the right information to the right experts. For more information about Operations Sentinel level 11.0, please check the [eCommunity](#) or contact Jim.Malnati@unisys.com.



DSI Virtual Tape Libraries Qualified for ClearPath Servers

Version 2 (v.2) of the DSI9000 Evolution series of Virtual Tape Library (VTL) disk-based backup systems has been qualified for use on ClearPath MCP and OS 2200 platforms. The DSI9000 provides high-performance, enterprise-level, disk-based data protection complemented by a wealth of options that enable a high degree of customization for individual applications. By enabling companies to keep backup data on disk, the DSI9000 VTL significantly improves the speed and dependability of recovery. Learn how the [city of Detroit is using VTL technology](#) or check the [eCommunity](#) for more information about VTL solutions.

EMC CLARiiON CX4 Series Mid-range Storage Devices Qualified for ClearPath Servers

We're happy to announce that EMC's [CLARiiON® CX4 Series mid-range storage systems](#) are qualified for ClearPath Servers. These systems offer advanced technology innovations, such as Flash drives, UltraFlex™ technology, and CLARiiON Virtual Provisioning, which reduce energy consumption and costs. For more information about how the CX4 Series can benefit your organization, contact your Unisys sales executive.

Major ClearPath Announcement: Press Release and Webinar Recordings

If you missed the announcement or webcast events, please take a few minutes to learn more about the new ClearPath platforms and software releases we unveiled in 4Q2008.

Press release:

- [New Unisys ClearPath Systems and Development Software Expand CIOs' Options for a Real-Time Infrastructure](#)

Presentations and Webcast recordings for download:

- [Achieving the Real-Time Enterprise with Unisys ClearPath® Servers and Advanced Development Technology](#)
- [New ClearPath Libra 4000 Announcement](#)
- [New ClearPath Dorado 700 and 4000 Servers](#)

Calendar

There are many learning opportunities available to you. Please be sure to check the Webcasts & Events section of the [eCommunity](#) for the latest information.

What	Where	When
<p>ClearPath Launch webcasts on a range of exciting topics, including:</p> <ul style="list-style-type: none"> • Achieving the Real-Time Enterprise with Unisys ClearPath • NEW Dorado 780 and 790 and NEW Dorado 4080 and 4090 Servers • NEW Libra 4080 and 4090 Servers • NEW BIS Release 46R1 Overview • NEW AB Suite 2.0 Overview 	Online via the eCommunity	<p>Recordings of the live events are now available.</p> <p>Check Webcasts & Events area in the eCommunity for details.</p>
UNITE Annual Technology Conference	Minneapolis, MN	November 8-11, 2009

Looking for more about development tools from Unisys? Sign up for [Developing Agility](#), a quarterly newsletter dedicated to helping organizations obtain maximum value from Agile Business Suite (AB Suite) and Enterprise Application Environment (EAE).

Specifications are subject to change without notice.

© 2008 Unisys Corporation.

All rights reserved.

Unisys and ClearPath are registered trademarks of Unisys Corporation. All other brands and products referenced herein are acknowledged to be trademarks or registered trademarks of their respective holders.